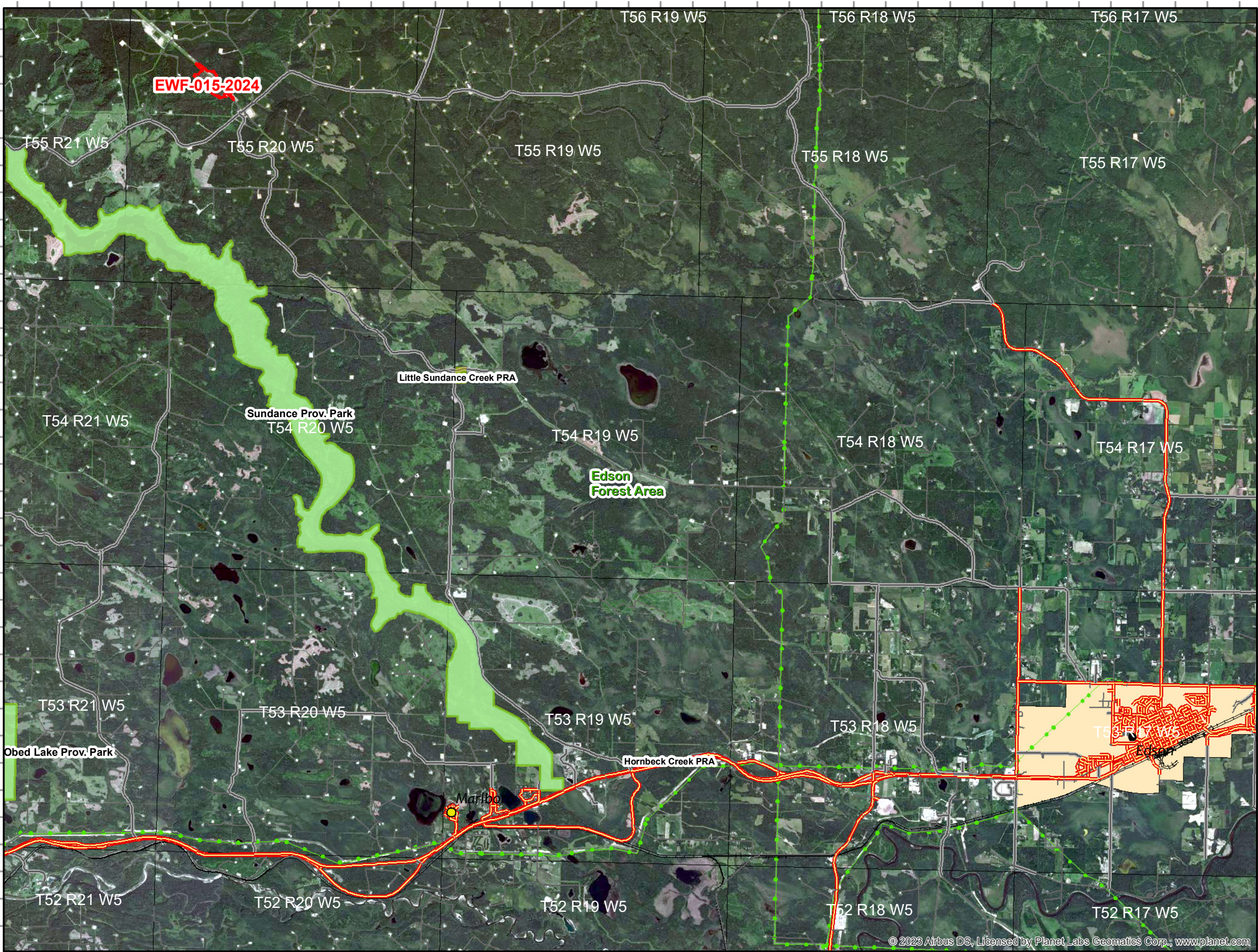


Public Map

EWF 015

April 17, 2024

The wildfire perimeter map is an estimate based on measurements such as GPS, aerial scanning and satellite imagery. This estimated perimeter can change as more accurate measurements become available. Areas within the fire perimeter may not have been affected by wildfire.



- Provincial Park - PP
- Provincial Recreation Area - PRA
- PerimeterSector
- Fire Polygon (EWF-015)
- Forest Area Boundary
- City
- Town
- Village
- Hamlet
- Railways**
- FEATURE_TYPE**
- Double Track Rail Line
- Multiple Track Rail Line
- Rail Line Spur
- Single Track Rail Line
- Powerlines**
- FEATURE_TYPE**
- Electrical Transmission Line
- First Nations
- National Park
- Provincial Park
- Provincial Recreation Area
- Wilderness Area
- Wilderness Park
- Wildland Provincial Park



Prepared by Wildfire Incident Command GIS Staff
 (c) Government of Alberta 2024
 Base Data Provided by the Government of Alberta
 Under the Alberta Open Government Licence
 All Rights Reserved
 Information depicted is subject to change
 The Government of Alberta assumes no
 responsibility for discrepancies at time of use

