

116°52'W 116°48'W 116°44'W 116°40'W 116°36'W 116°32'W 116°28'W 116°24'W 116°20'W 116°16'W 116°12'W 116°8'W 116°6'W 116°4'W 116°2'W 116°0'W 115°56'W 115°52'W 115°48'W 115°44'W 115°40'W 115°36'W

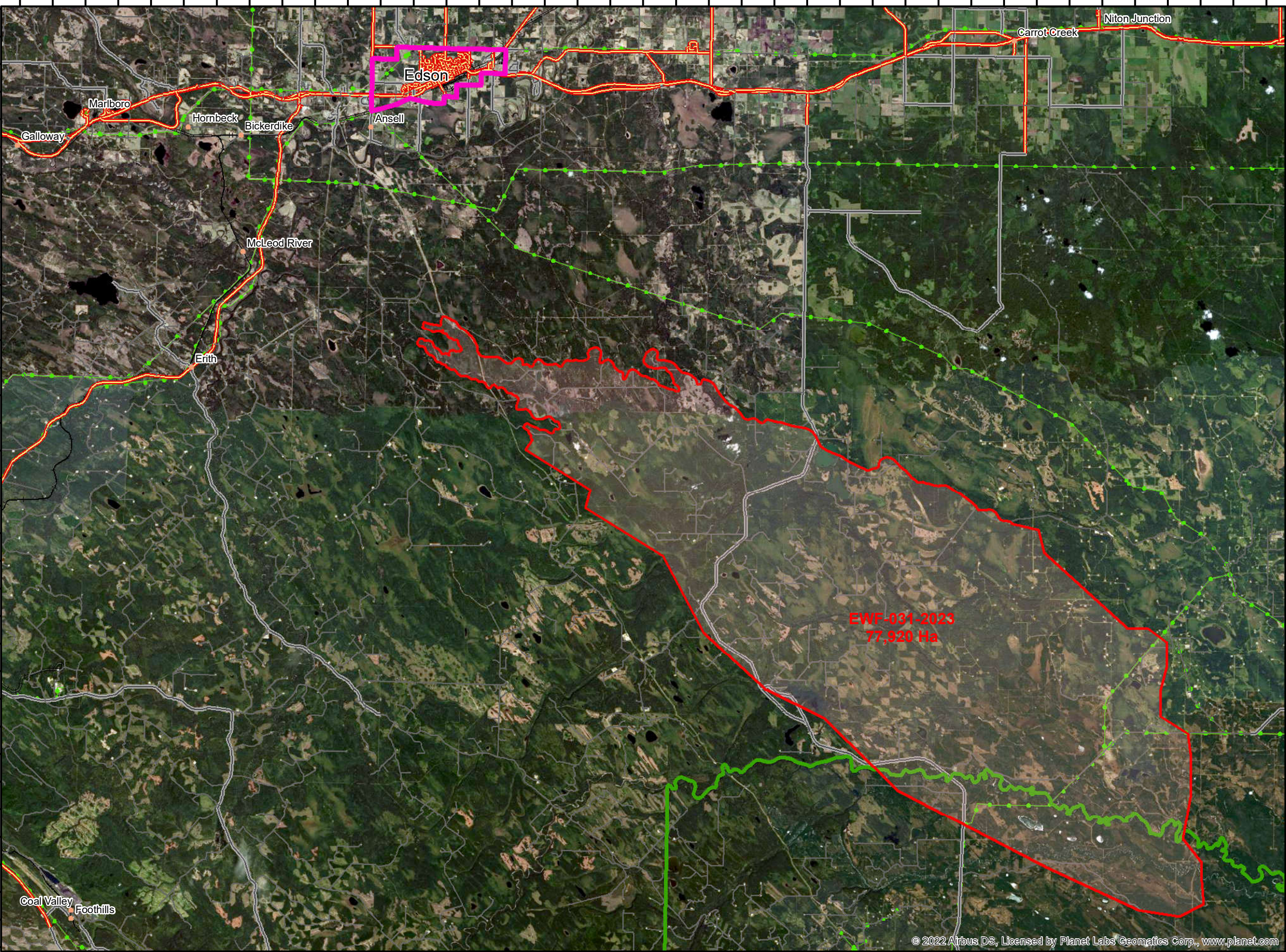
Public

EWF 031

2023-May-06

1:250,000

The wildfire perimeter map is an estimate based on measurements such as GPS, aerial scanning and satellite imagery. This estimated perimeter can change as more accurate measurements become available. Areas within the fire perimeter may not have been affected by wildfire.



- PerimeterSector
  - Fire Polygon (EWF-031)
  - Hamlet
  - Locality
  - Towns BME
  - Forest Area Boundary
- Roads**
- FEATURE\_TYPE**
- Paved
  - Two Lane Gravel Road
  - One Lane Gravel Road
- Railways**
- Double Track Rail Line
  - Multiple Track Rail Line
  - Rail Line Spur
  - Single Track Rail Line
- Powerlines**
- Electrical Transmission Line

EWF-031-2023  
77,920 Ha

53°37'N 53°35'N 53°33'N 53°31'N 53°29'N 53°27'N 53°25'N 53°23'N 53°21'N 53°19'N 53°17'N 53°15'N 53°13'N 53°11'N 53°9'N 53°8'N 53°7'N 53°6'N 53°5'N 53°4'N

53°37'N 53°35'N 53°33'N 53°31'N 53°29'N 53°27'N 53°25'N 53°23'N 53°21'N 53°19'N 53°17'N 53°15'N 53°13'N 53°11'N 53°9'N 53°8'N 53°7'N 53°6'N 53°5'N 53°4'N