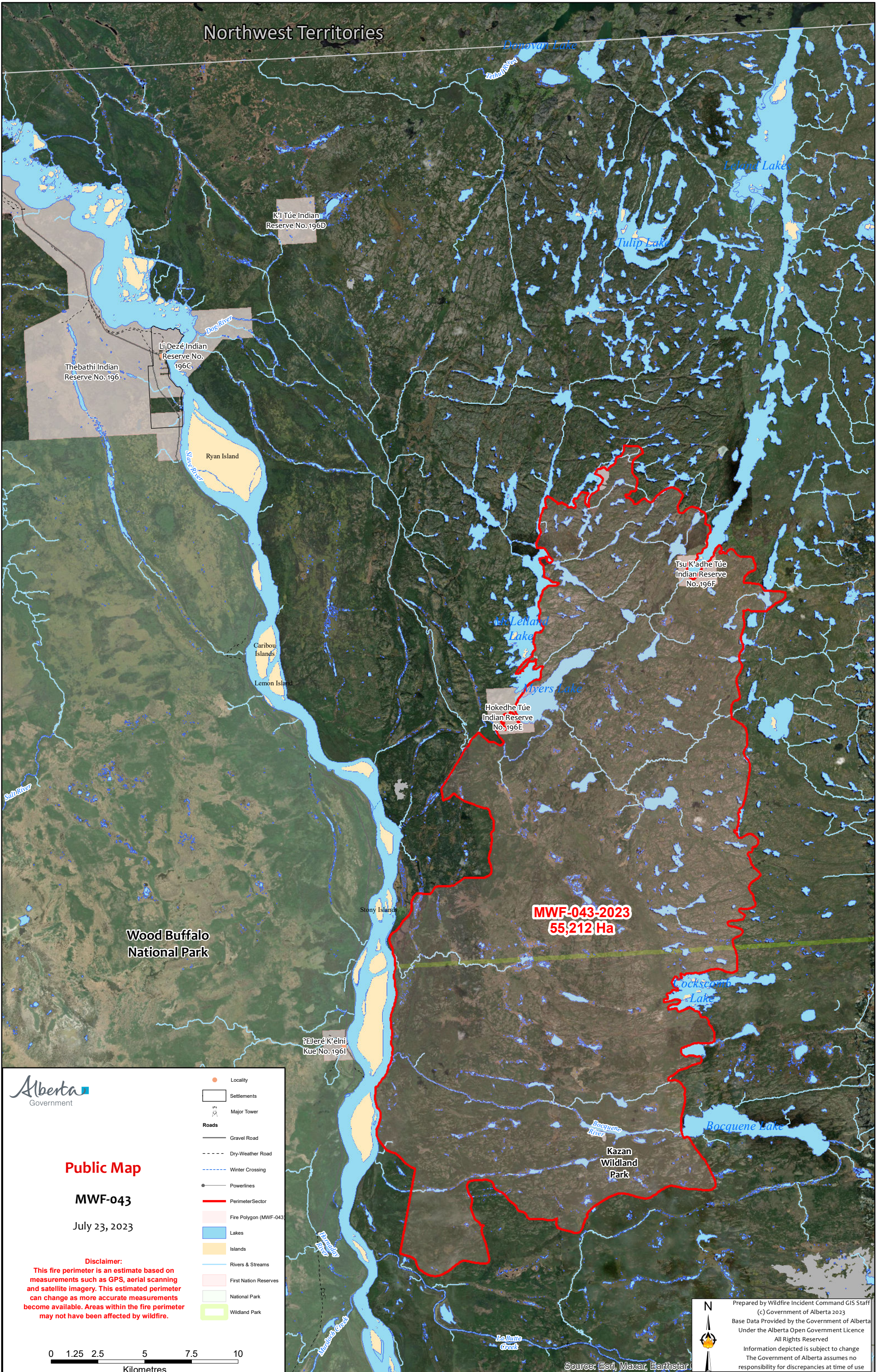


# Northwest Territories



**Alberta**  
Government

**Public Map**

**MWF-043**

July 23, 2023

**Disclaimer:**  
This fire perimeter is an estimate based on measurements such as GPS, aerial scanning and satellite imagery. This estimated perimeter can change as more accurate measurements become available. Areas within the fire perimeter may not have been affected by wildfire.

●	Locality
□	Settlements
⊙	Major Tower
<b>Roads</b>	
—	Gravel Road
- - -	Dry-Weather Road
- · - ·	Winter Crossing
— ● —	Powerlines
—	Perimeter Sector
■	Fire Polygon (MWF-043)
■	Lakes
■	Islands
—	Rivers & Streams
■	First Nation Reserves
■	National Park
■	Wildland Park

0 1.25 2.5 5 7.5 10  
Kilometres

Source: Esri, Maxar, Earthstar

Prepared by Wildfire Incident Command GIS Staff  
(c) Government of Alberta 2023  
Base Data Provided by the Government of Alberta  
Under the Alberta Open Government Licence  
All Rights Reserved  
Information depicted is subject to change  
The Government of Alberta assumes no  
responsibility for discrepancies at time of use