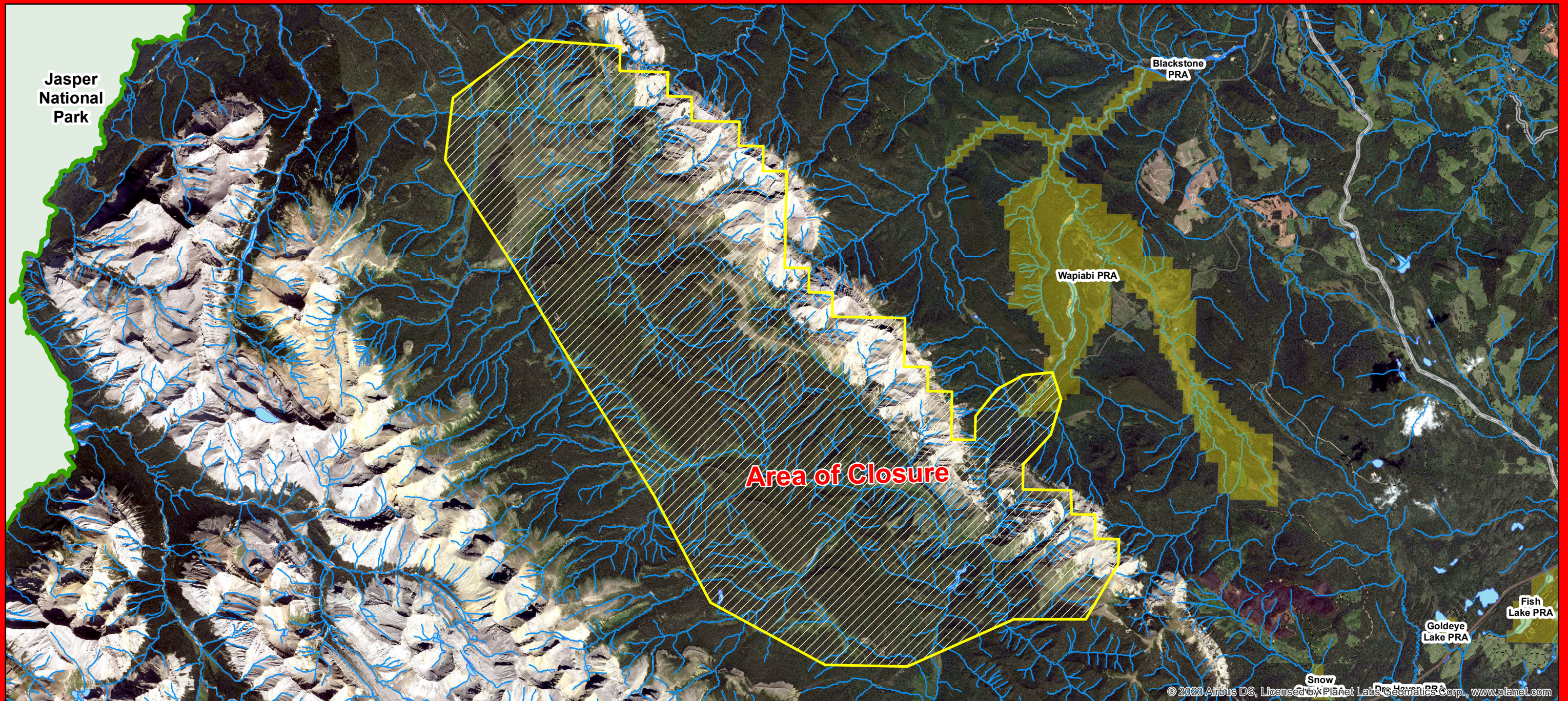


Forest Area Closure



General Location Lat: 52 31.681 N° Long: 52 31.681W

°Effective Date: July 23rd, 2024

Due to: Current Wildfire conditions

For more Information call 310-FIRE(3473)

DISCLAIMER:

The wildfire perimeter map is an estimate based on measurements such as GPS, aerial scanning and satellite imagery.

This estimated perimeter can change as more accurate measurements become available.

Areas within the fire perimeter may not have been affected by wildfire.



1:130,000

0 0.5 1 2 3 4 5 6

Kilometres



Information Team
Alberta Ministry of Environment and Parks
North Central Geospatial Unit
Where applicable:
Data provided by the Government of Alberta under
The Alberta Open Government License of November 2014
Major Town Data provided by NAV CANADA
NPOI Data CSEI, Licensed by Inuvik Geomatics Corp.
Lithology, Alberta, Canada
Base Imagery Sources: Esri, Maxar, GeoEye, Earthstar
Geomatics, CNES/Airbus DS, USDA, USGS, AeroGRID,
IGN, and the GIS User Community
The Minister and the Crown provide this information
without warranty or representation as to any matter
including but not limited to whether the data, information
is current, accurate or free from errors, omissions, damage,
or loss and whether it is otherwise suitable or available
for any use or any other purpose.
© 2023 Government of Alberta
NAD83 TM