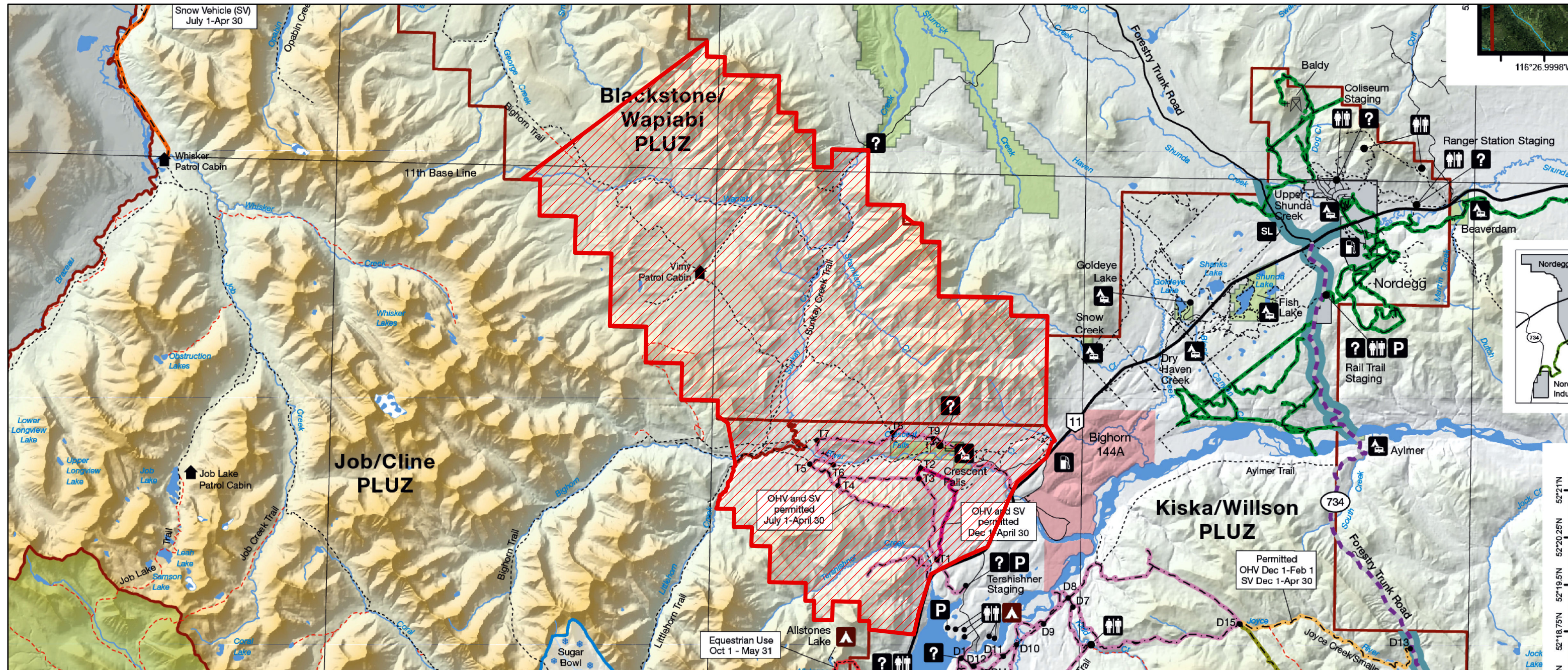


TEMPORARY AREA CLOSURE



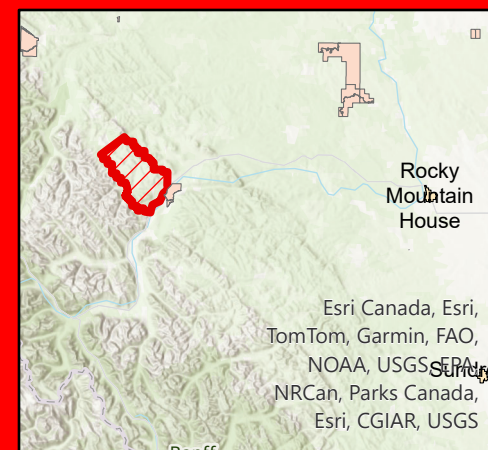
Closed per Public Lands Administration Regulation AR 187/2011 s. 184.1 - Closure of Areas

General Location: Southern portion of the Blackstone/Wapiabi Public Land Use Zone, and the NW portion of the Kiska/Wilson Public Land Use Zone.

Due to active wildfire suppression of RWF-062 and extreme wildfire danger

Effective Date: August 2, 2024 until further notice

NOTICE: Temporary Closure of the Southern portion of the Blackstone/Wapiabi Public Land Use Zone, and the portion of the Kiska/Wilson Public Land Use Zone NW of Highway 11 from north of Allstones Lake Trailhead to south of Snow Creek. Crescent Falls is included in this closure. Highway 11 and Allstones Lake is not included in this closure.



Rocky Mountain House
Esri Canada, Esri, TomTom, Garmin, FAO, NOAA, USGS, EPA, NRCan, Parks Canada, Esri, CGIAR, USGS