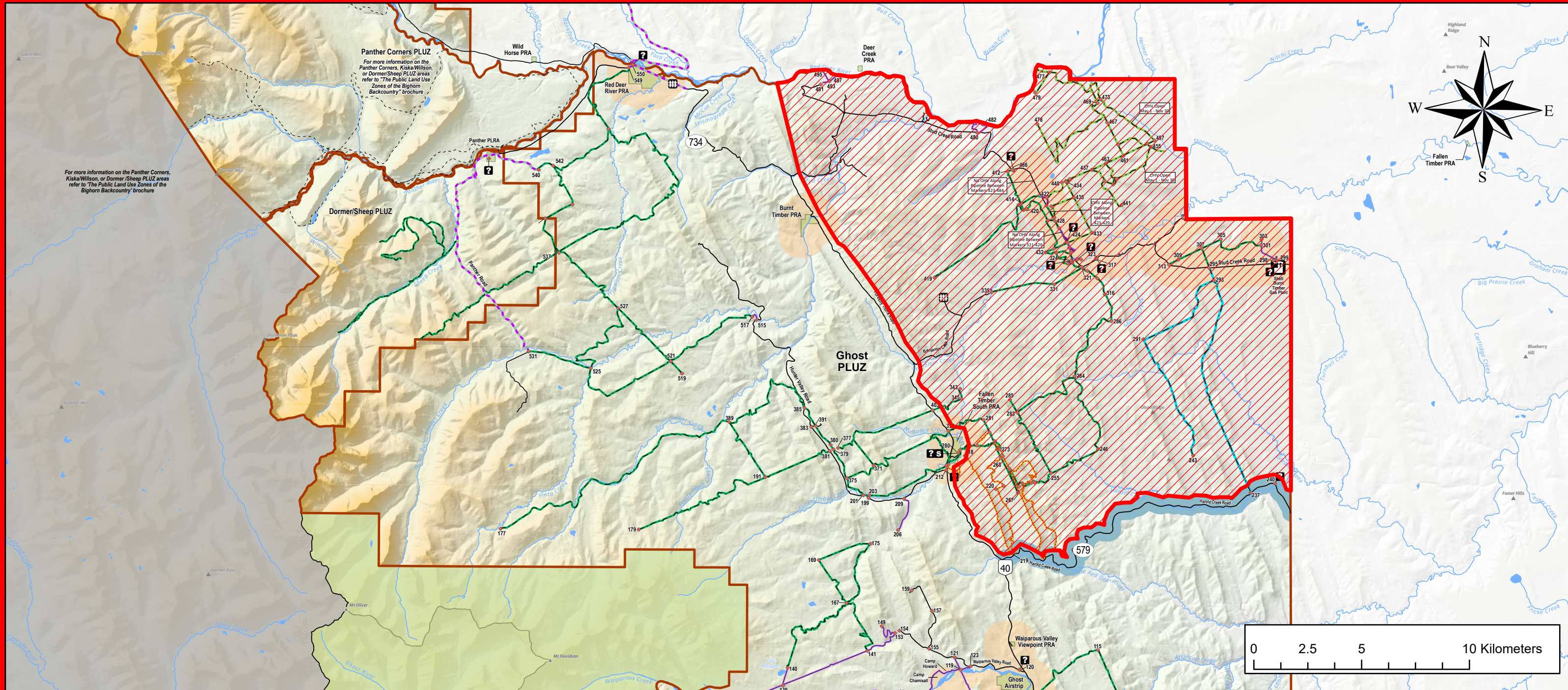


TEMPORARY AREA CLOSURE



Closed per Public Lands Administration Regulation AR 187/2011 s. 184.1 - Closure of Areas

General Location: North East Portion of the Ghost Public Land Use Zone

Due to active wildfire suppression of CWF-057 Fallentimber Fire and extreme wildfire danger

Effective Date: July 30, 2024 until further notice

**NOTICE: Temporary closure of the NE portion of Ghost PLUZ including Stud Creek Road
Closure does not include highway 579 and highway 40 (Forestry Trunk Road) or PRAs on the closure boundary**

For more information call 310-LAND(5263)

