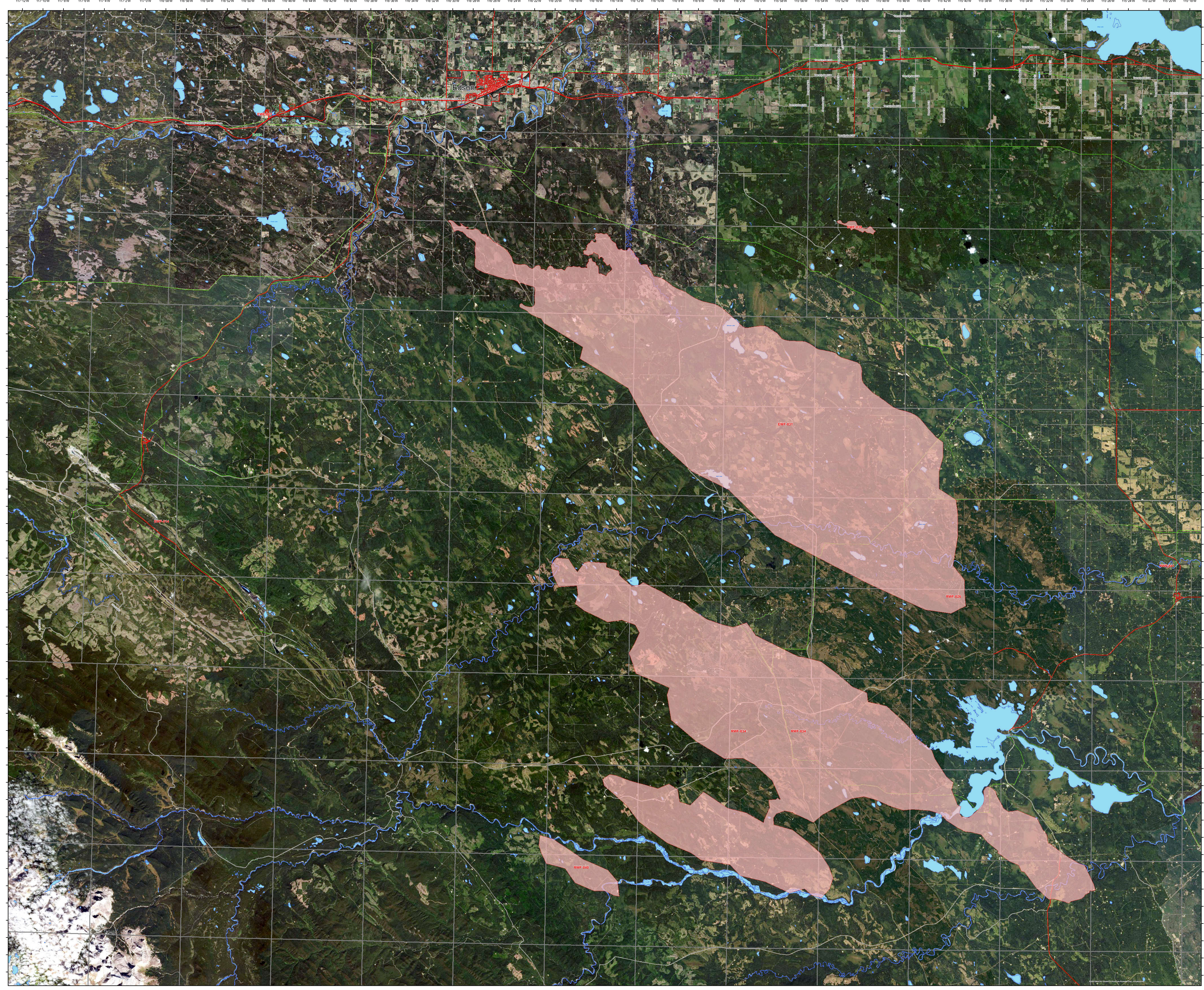


The wildfire perimeter map is an estimate based on measurements such as GPS, aerial scanning and satellite imagery. This estimated perimeter can change as more accurate measurements become available. Areas within the fire perimeter may not have been affected by wildfire.



- Hamlet
 - Locality
 - Towns BME
 - Wildfire Perimeter
 - <all other values>
 - Paved
 - Two Lane Gravel Road
 - One Lane Gravel Road
 - Dry-Weather Road
- Railways**
- FEATURE_TYPE**
- Double Track Rail Line
 - Multiple Track Rail Line
 - Rail Line Spur
 - Single Track Rail Line
- Powerlines**
- FEATURE_TYPE**
- Electrical Transmission Line
 - Hydrography (Polygons at 1 to 20K)

1:120,000

