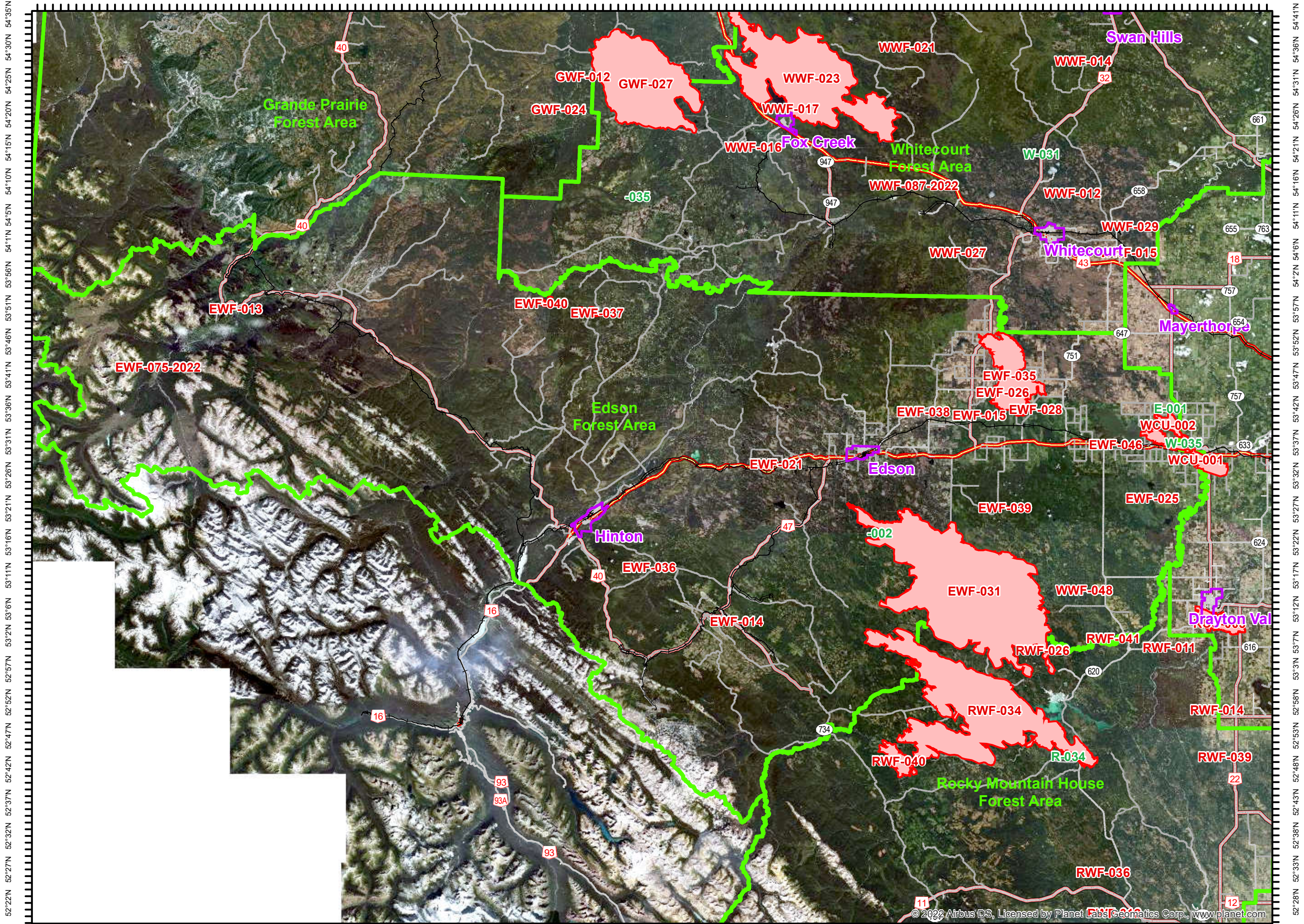


Public Edson Forest Area Wildfires

2023-May-23

1:1,000,000



The wildfire perimeter map is an estimate based on measurements such as GPS, aerial scanning and satellite imagery. This estimated perimeter can change as more accurate measurements become available. Areas within the fire perimeter may not have been affected by wildfire.

- ▬ Wildfire Perimeter
- ▬ Towns BME
- ▬ Forest Area Boundary WFE
- ▬ Divided Paved Road
- ▬ Four Lane Undivided Paved Road
- ▬ Two Lane Undivided Paved Road
- ▬ One Lane Undivided Paved Road
- ▬ Two Lane Gravel Road

52°22'N 52°27'N 52°32'N 52°37'N 52°42'N 52°47'N 52°52'N 52°57'N 53°02'N 53°07'N 53°12'N 53°17'N 53°22'N 53°27'N 53°32'N 53°37'N 53°42'N 53°47'N 53°52'N 53°57'N 54°02'N 54°07'N 54°12'N 54°17'N 54°22'N 54°27'N 54°32'N 54°37'N 54°42'N 54°47'N 54°52'N 54°57'N

114°28'W 114°33'W 114°38'W 114°43'W 114°48'W 114°53'W 114°58'W 115°03'W 115°08'W 115°13'W 115°18'W 115°23'W 115°28'W 115°33'W 115°38'W 115°43'W 115°48'W 115°53'W 115°58'W 116°03'W 116°08'W 116°13'W 116°18'W 116°23'W 116°28'W 116°33'W 116°38'W 116°43'W 116°48'W 116°53'W 116°58'W 117°03'W 117°08'W 117°13'W 117°18'W 117°23'W 117°28'W 117°33'W 117°38'W 117°43'W 117°48'W 117°53'W 117°58'W 118°03'W 118°08'W 118°13'W 118°18'W 118°23'W 118°28'W 118°33'W 118°38'W 118°43'W 118°48'W 118°53'W 118°58'W 119°03'W 119°08'W 119°13'W 119°18'W 119°23'W 119°28'W 119°33'W 119°38'W 119°43'W 119°48'W 119°53'W 119°58'W