

Pelican Mountain Prescribed Fire

Slave Lake Forest Area

Prescribed Fire

Alberta Wildfire may be conducting one or more prescribed fires approximately 12.5 kilometres southwest of Sandy Lake. The exact location of the prescribed fire area is directly north of Kilometre 123 on the C-Road.

The prescribed fires will vary in size from three to five hectares and burning will take place when forecasted weather and on-the-ground conditions allow for a safe, controlled burn.

Smoke may be visible at times but will be localized and short lived. Public roads and highways are expected to remain open; however, traffic may be controlled. Watch for prescribed fire in progress and smoke signage near the area.

The purpose of these prescribed fires is to examine fire behaviour in various FireSmart treatments.



For more information:

Wildfire.alberta.ca
Leah Lovequist Wildfire Information Officer
Slave Lake Forest Area
780-849-0945 | leah.lovequist@gov.ab.ca

T79
R24
W4 M
SANDY LAKE
TOWER

T79
R23
W4 M

Sandy Lake
Settlement

T79
R22
W4 M
Sandy L

813

T78
R24
W4 M

T78
R23
W4 M

T78
R22
W4 M
Sandy Lake
Settlement

12.5 km

km 123 on C-Road

C - Road

813

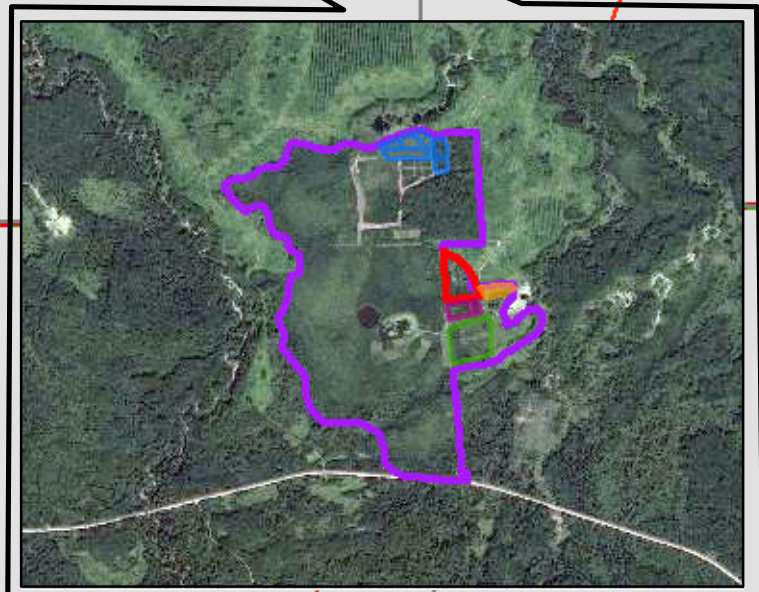
T77
R24
W4 M

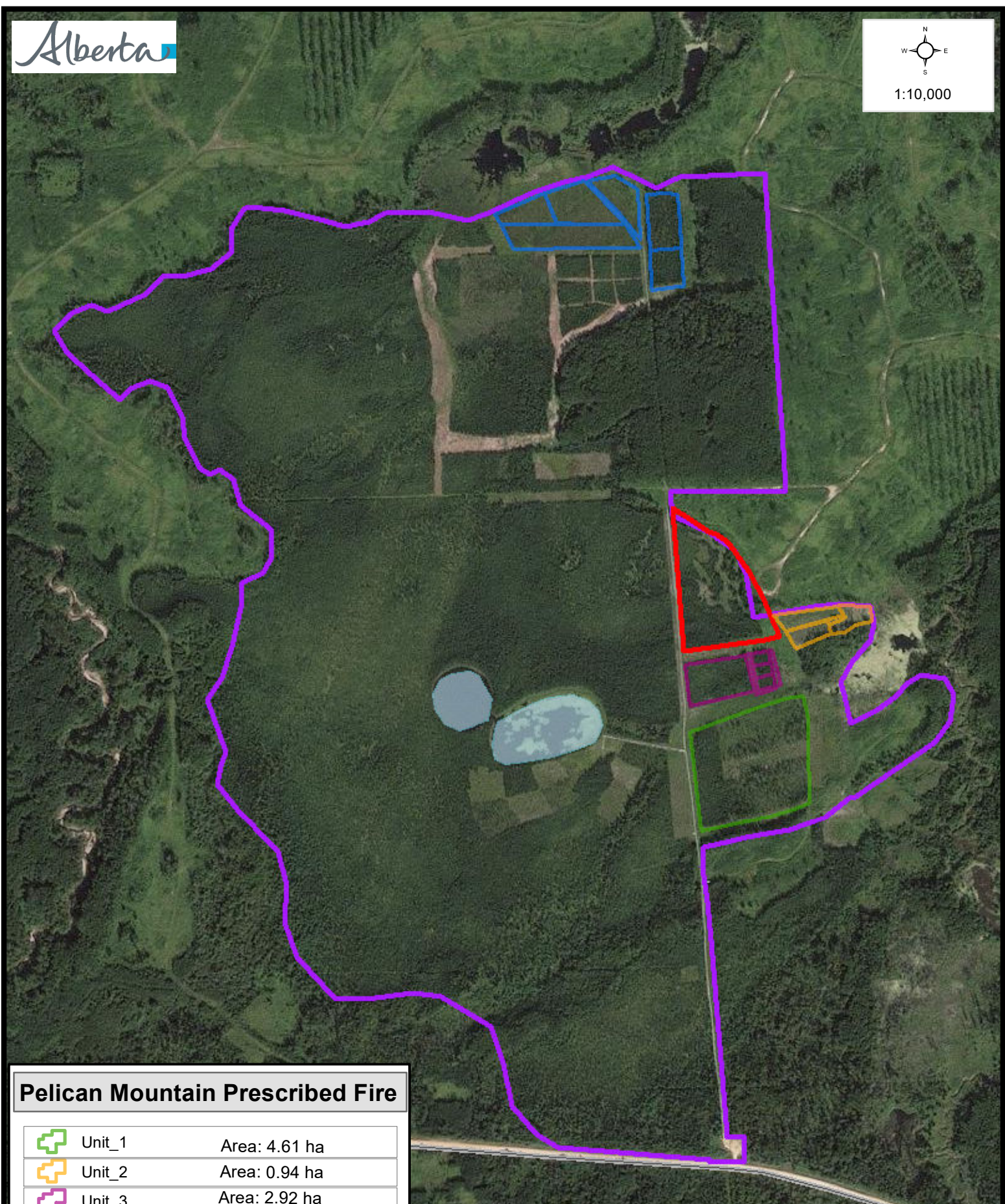
T77
R23
W4 M

T77
R22
W4 M







Pelican Mountain Prescribed Fire

	Unit_1	Area: 4.61 ha
	Unit_2	Area: 0.94 ha
	Unit_3	Area: 2.92 ha
	Unit_4	Area: 3.14 ha
	Unit_5	Area: 8.38 ha
	Site Perimeter	





Pelican Mountain Prescribed Fire

	Unit_1	Area: 4.61 ha
	Unit_2	Area: 0.94 ha
	Unit_3	Area: 2.92 ha
	Unit_4	Area: 3.14 ha
	Unit_5	Area: 8.38 ha
	Site Perimeter	

©2024 Government of Alberta All rights reserved.
 The Minister and the Crown provides this information without warranty or representation
 As to any matter including but not limited to whether the data/information is correct,
 Accurate or free from error, defect, danger, or hazard, and whether it is otherwise useful
 or suitable for any use the user may make of it.
 Base Map Data provided by the Government of Alberta under the Alberta Open Government Licence.
 November, 2014
 Imagery: © 2023 Airbus DS, Licensed by Planet Labs Geomatics Corp., www.planet.com Date: 05/07/2024