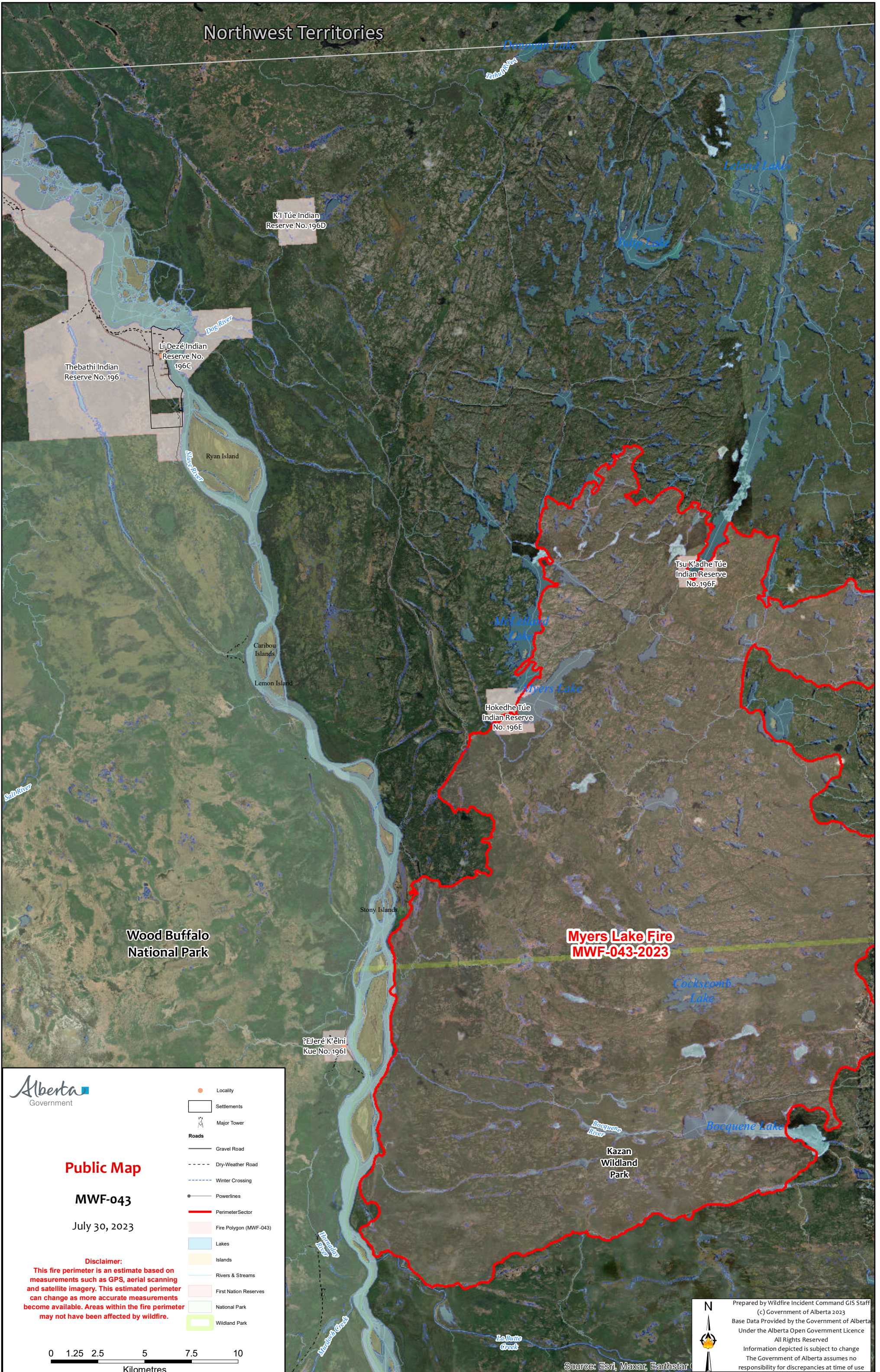


Northwest Territories



Alberta
Government

Public Map

MWF-043

July 30, 2023

Disclaimer:
This fire perimeter is an estimate based on measurements such as GPS, aerial scanning and satellite imagery. This estimated perimeter can change as more accurate measurements become available. Areas within the fire perimeter may not have been affected by wildfire.

- Locality
- Settlements
- Major Tower
- Roads
 - Gravel Road
 - Dry-Weather Road
 - Winter Crossing
- Powerlines
- Perimeter Sector
- Fire Polygon (MWF-043)
- Lakes
- Islands
- Rivers & Streams
- First Nation Reserves
- National Park
- Wildland Park

0 1.25 2.5 5 7.5 10
Kilometres

Source: Esri, Maxar, Earthstar

Prepared by Wildfire Incident Command GIS Staff
(c) Government of Alberta 2023
Base Data Provided by the Government of Alberta
Under the Alberta Open Government Licence
All Rights Reserved
Information depicted is subject to change
The Government of Alberta assumes no
responsibility for discrepancies at time of use