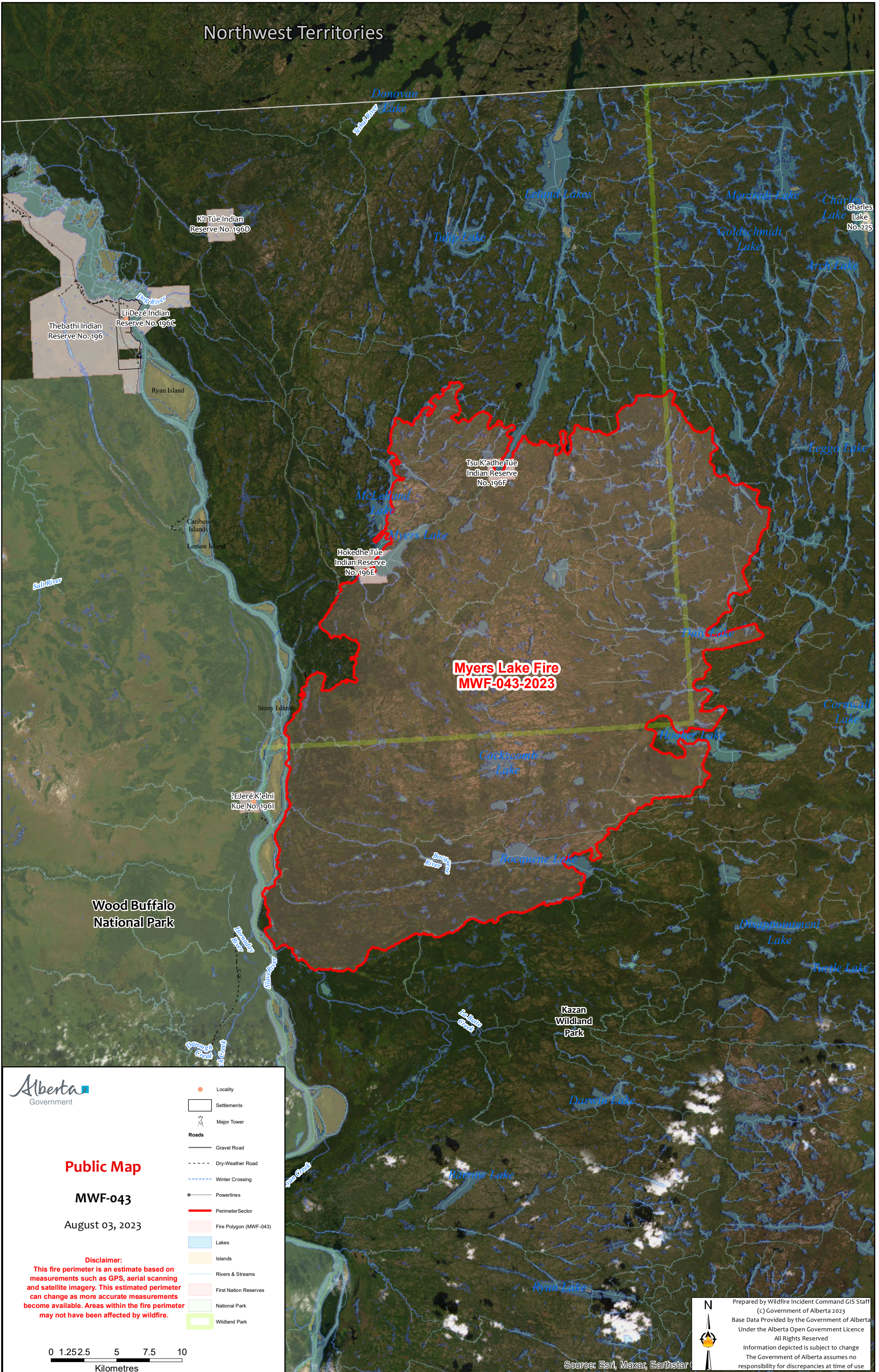


# Northwest Territories



**Alberta**  
Government

**Public Map**

**MWF-043**

August 03, 2023

**Disclaimer:**  
This fire perimeter is an estimate based on measurements such as GPS, aerial scanning and satellite imagery. This estimated perimeter can change as more accurate measurements become available. Areas within the fire perimeter may not have been affected by wildfire.

	Locality
	Settlements
	Major Tower
<b>Roads</b>	
	Gravel Road
	Dry-Weather Road
	Winter Crossing
	Powerlines
	Perimeter Sector
	Fire Polygon (MWF-043)
	Lakes
	Islands
	Rivers & Streams
	First Nation Reserves
	National Park
	Wildland Park

0 1.25 2.5 5 7.5 10  
Kilometres

Source: Esri, Maxar, Earthstar

Prepared by Wildfire Incident Command GIS Staff  
(c) Government of Alberta 2023  
Base Data Provided by the Government of Alberta  
Under the Alberta Open Government Licence  
All Rights Reserved  
Information depicted is subject to change  
The Government of Alberta assumes no responsibility for discrepancies at time of use