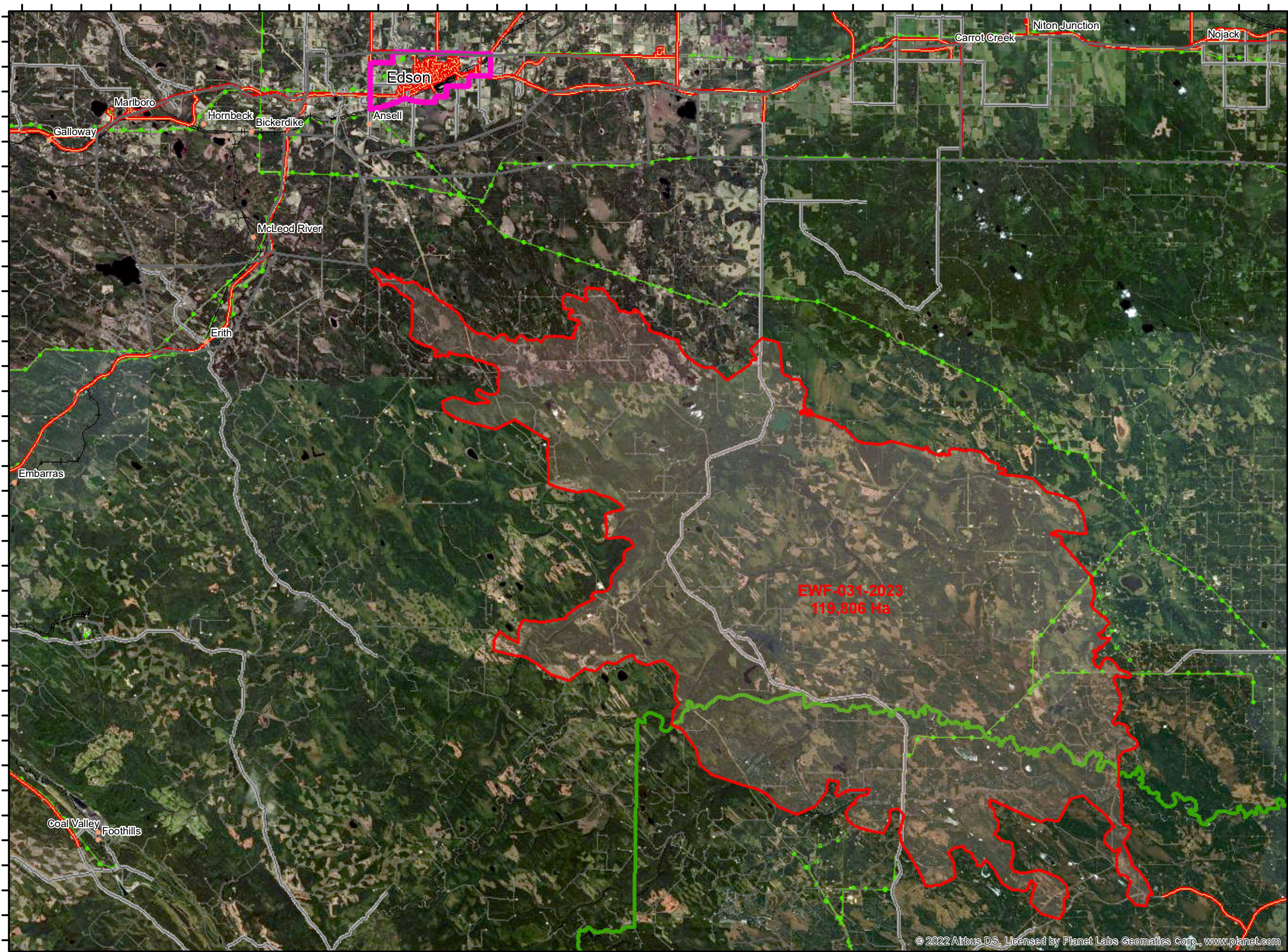


116°54'W 116°50'W 116°46'W 116°42'W 116°38'W 116°34'W 116°30'W 116°26'W 116°22'W 116°18'W 116°14'W 116°10'W 116°6'W 116°2'W 115°58'W 115°54'W 115°50'W 115°46'W 115°42'W 115°38'W 115°34'W 115°30'W

**Public**  
**EWF 031**  
**2023-May-21**  
 1:275,000

The wildfire perimeter map is an estimate based on measurements such as GPS, aerial scanning and satellite imagery. This estimated perimeter can change as more accurate measurements become available. Areas within the fire perimeter may not have been affected by wildfire.



- PerimeterSector
- Fire Polygon (EWF-031)
- Heat Perimeter
- Other
- ▲ Hamlet
- Locality
- Towns BME
- Forest Area Boundary
- Roads**
- FEATURE\_TYPE**
- Paved
- Two Lane Gravel Road
- One Lane Gravel Road
- Railways**
- Double Track Rail Line
- Multiple Track Rail Line
- Rail Line Spur
- Single Track Rail Line
- Powerlines**
- Electrical Transmission Line

**EWF-031-2023**  
**119,806 Ha**