

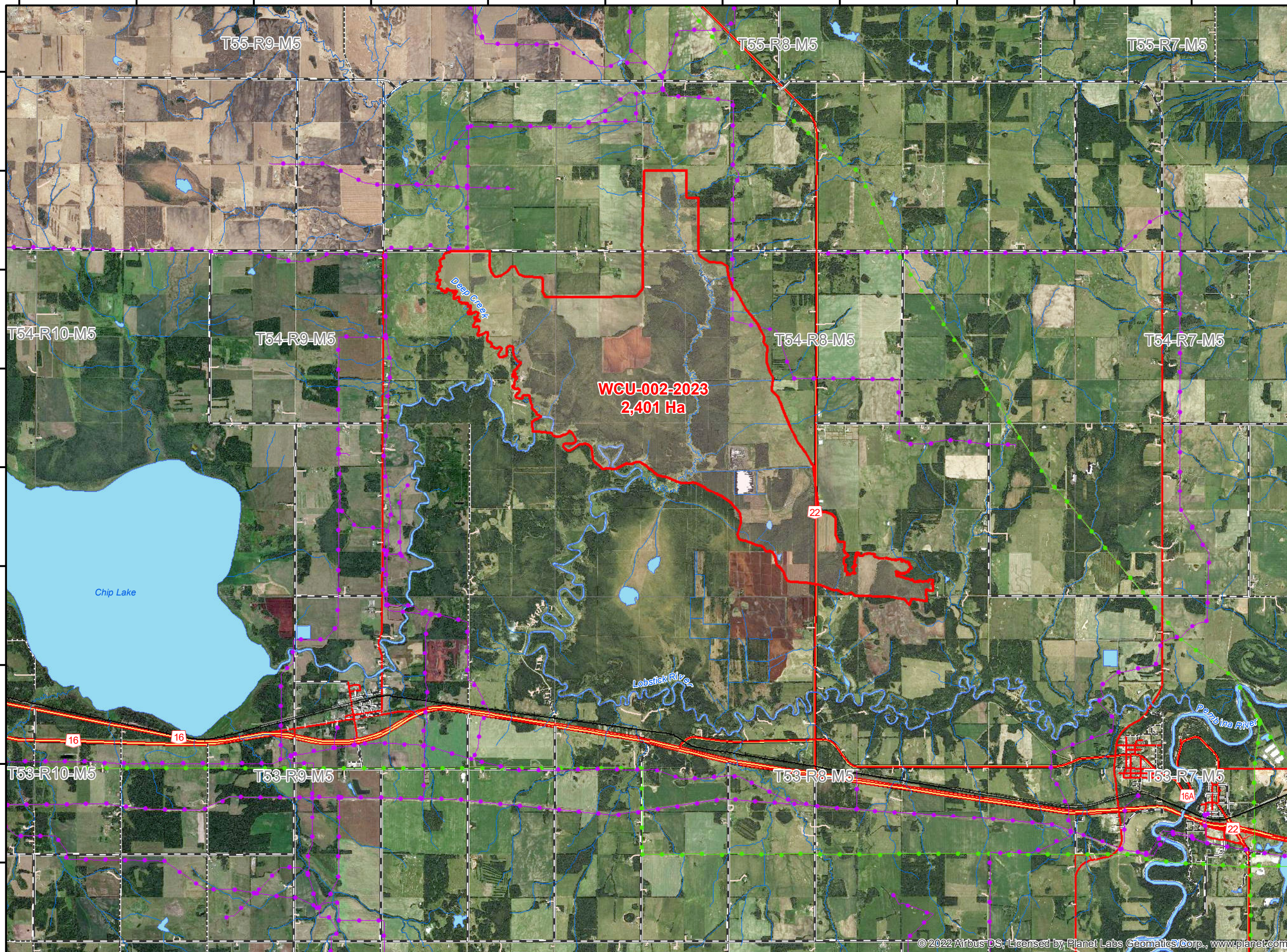
**Public**

**WCU 002**

2023-May-05

1:70,000

The wildfire perimeter map is an estimate based on measurements such as GPS, aerial scanning and satellite imagery. This estimated perimeter can change as more accurate measurements become available. Areas within the fire perimeter may not have been affected by wildfire.



- PerimeterSector
- Fire Polygon (WCU-002)
- Pipelines**
- FEATURE\_TYPE**
- Pipeline
- Railways**
- FEATURE\_TYPE**
- Double Track Rail Line
- Single Track Rail Line
- Powerlines**
- FEATURE\_TYPE**
- Electrical Transmission Line
- Hydrography (Polygons at 1 to 20K)
- Hydrography (Lines at 1 to 20K)
- Divided Paved Road
- Two Lane Undivided Paved Road
- One Lane Undivided Paved Road
- Two Lane Gravel Road
- Interchange Ramp
- One Lane Gravel Road
- Driveway
- Road - Primary Highway
- ATS Township