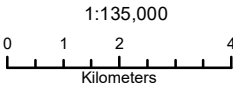


SWF_081-2023

Public

May 31, 2023



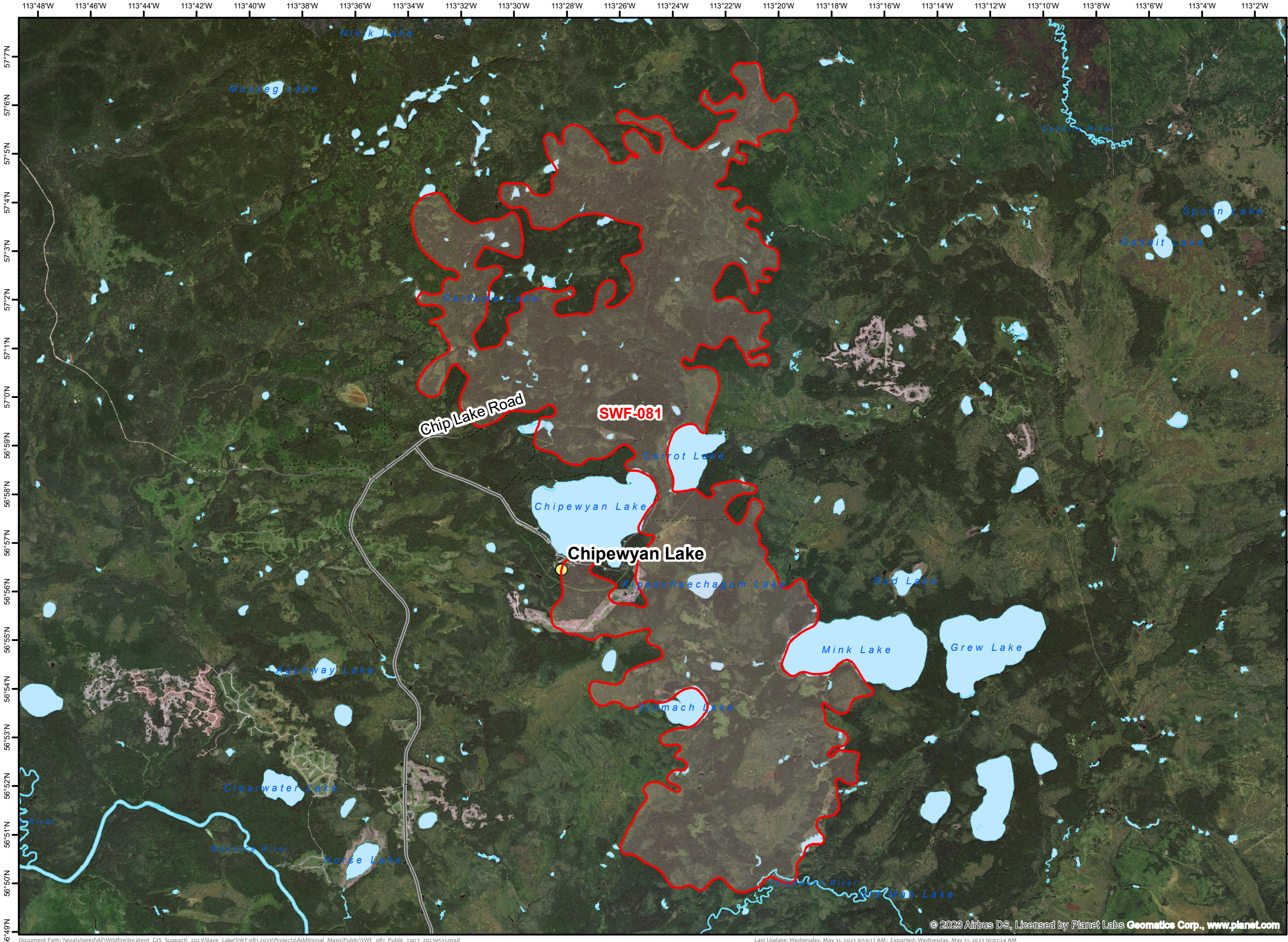
Legend

Disclaimer:
This fire perimeter is an estimate based on measurements such a GPS, aerial scanning and satellite imagery. This estimated perimeter can change as more accurate measurements become available. Areas within the fire perimeter may not have been affected by wildfire.

Alberta



Prepared by Wildfire Incident Command GIS Staff
(c) Government of Alberta 2023
Base Data Provided by the Government of Alberta
Under the Alberta Open Government Licence
All Rights Reserved
Information depicted is subject to change
The Government of Alberta assumes no
responsibility for discrepancies at time of use



Document Path: \\goa\shared\AF\Wildfire\Incident_GIS_Support\2023\Slave_Lake\SWF-081-2023\Projects\Additional_Maps\Public\SWF_081_Public_11x17_20230531.mxd

Last Update: Wednesday, May 31, 2023 9:59:17 AM; Exported: Wednesday, May 31, 2023 10:01:24 AM

© 2023 Airbus DS, Licensed by Planet Labs Geomatics Corp., www.planet.com