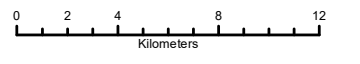


117°36'W 117°32'W 117°28'W 117°24'W 117°20'W 117°16'W 117°12'W 117°8'W 117°4'W 117°0'W 116°56'W 116°52'W 116°48'W 116°44'W 116°40'W 116°36'W 116°32'W 116°28'W 116°24'W 116°20'W 116°16'W 116°12'W 116°8'W

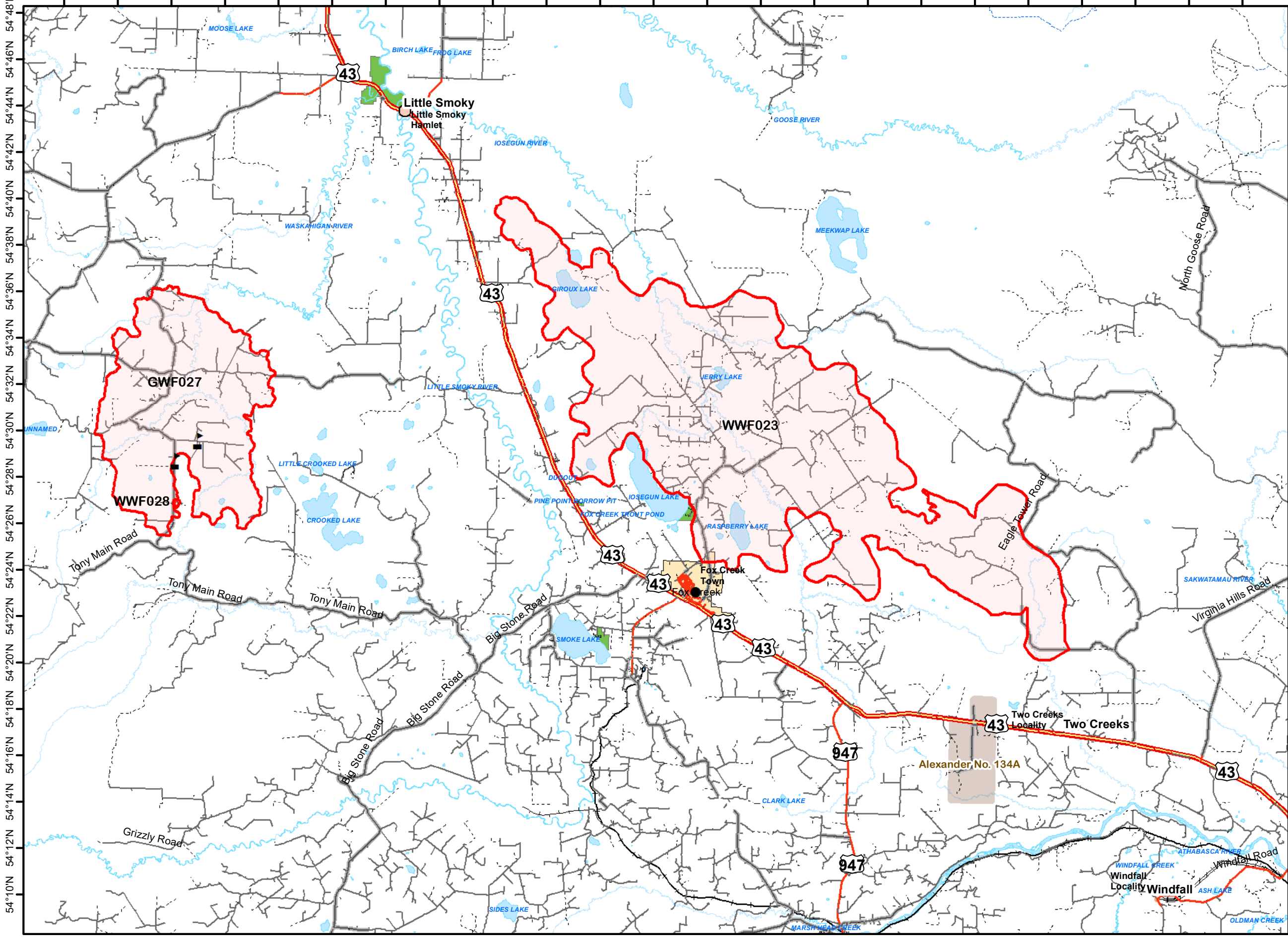


Public Eagle Complex WCX 001

May 17, 2023



- PerimeterSector
- Fire Polygon (WWF-028)
- Value at Risk
- PerimeterSector
- Fire Polygon (GWF-027)
- PerimeterSector
- Fire Polygon (WWF-023)
- Town
- Hamlet
- First Nations
- Provincial Recreation Area



Prepared by Wildfire Incident Command GIS Staff
 (c) Government of Alberta 2023
 Base Data Provided by the Government of Alberta
 Under the Alberta Open Government Licence
 All Rights Reserved
 Information depicted is subject to change
 The Government of Alberta assumes no
 responsibility for discrepancies at time of use

Disclaimer:
 This fire perimeter is an estimate based on measurements such as GPS, aerial scanning and satellite imagery. This estimated perimeter can change as more accurate measurements become available. Areas within the fire perimeter may not have been affected by wildfire.